



RestoreManager

Scalable NetApp File Catalog with Data Analytics

File indexing, search and restore for NetApp file environments

RestoreManager Highlights

- Easily locate and recover files on NetApp storage
- Support user restore requests, legal search, compliance audits, etc.
- Manage Snapshot, SnapVault and SnapMirror schedules and retention times
- Multiple filters and search options to locate files, including name (with wildcards), type, file size, creation date, deletion date, etc.
- Restore one or more files to original or alternate location
- Highly scalable solution
- Reports help identify stale data, analyze storage consumption
- Uses ONTAP SnapDiff protocol
- Simple, affordable licensing based on NetApp storage controller (no user, file or data size limits)

“Where Did My File Go?”

Many IT admins have had their day ruined by users asking a simple question: “Where did my file go?” It’s a common request: users delete files by mistake, drag and drop them into the wrong sub-directory, overwrite a new file with an old one, and so on.

It’s easy to understand the problem, but not so easy to solve it. In NetApp file environments, there is no central file catalog that lets you easily find and restore one or more files. All you can do is spend time looking for the file needle in the storage haystack, or – as often happens – simply deny the recovery request.

We have a better way.

“Sure, we can find it with RestoreManager!”

RestoreManager from ProLion creates a central, online file index of every NetApp snapshot, giving you a single catalog-based view into your files. You can search snapshots using multiple criteria and restore files and folders right from within RestoreManager with a single click.

What’s more, RestoreManager indexes both primary and secondary storage. That’s important because primary snapshots are usually only maintained for a few days. By also indexing SnapMirror and SnapVault destination volumes, you can find older versions of files that have been moved off your primary storage.

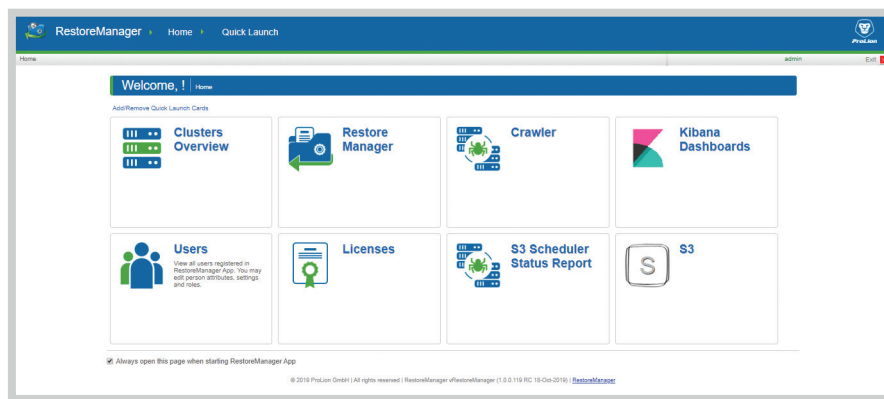
With RestoreManager, you can truly use NetApp Snapshot, SnapVault and SnapMirror technologies for filer backup and get away from slower backup processes. RestoreManager fills the array copy gap of not having a searchable file index.

How It Works

Immediately after a new Snapshot of a volume has been generated, RestoreManager uses the [SnapDiff API](#) to gather the relevant metadata from the files and folders and loads this data to its central database. Searching is now easy with this central index in place. A single click restores the files you find to a specific folder or to their original location.

Many filters enable targeted searching:

- By file name, parts of the name or file path, with wildcards being permitted
- By data type or file ending: jpg, xls, doc, ppt, etc.
- By deletion period
- By creation period
- By file size
- Etc.



RestoreManager features an easy-to-use interface with clearly marked functions for setup, management, recovery, etc.

Flexible Choice of Indexing Strategy

RestoreManager can selectively index primary systems only, secondary systems only, or both. The choice is up to the users and depends on file recovery requirements.

File Data Analytics Reporting

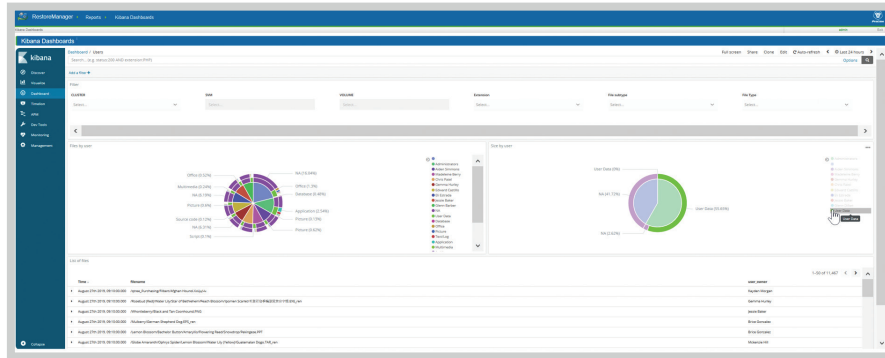
RestoreManager analyzes your NetApp filer data and returns easy-to-read reports that will provide you the insight and understanding you need to start cleaning house and ensuring you're complying with corporate policy.

Among the many insights available from RestoreManager, you will learn:

- The number of files and total storage space used by files based on their type (e.g. Office files, email, images, etc.)
- The age of your file data, which can also be grouped by type
- How to identify stale files that haven't been accessed over a defined period

Armed with these insights, you can take targeted action to clean up your file environment. We've seen users recover as much as 80% of their storage space. That's serious savings!

You can also clear out old files that may be creating a compliance hazard. You'll be a hero to your legal department.



RestoreManager provides a set of pre-built reports that cover overall storage data, user-based information, file-based information and more. In addition, the Kibana reporting dashboard lets you create reports using any of the meta-data collected by RestoreManager.

Solution Architecture

RestoreManager supports Clustered Data ONTAP for NetApp primary storage systems. For NetApp SnapVault and SnapMirror targets, RestoreManager works with ONTAP and NetApp Cloud Backup (formerly AltaVault).

RestoreManager uses the Elasticsearch database, an open source solution that has excellent scalability, performance, load balancing and availability.

The software is deployed easily as a downloadable OVA file.

How to Purchase RestoreManager

RestoreManager is licensed per NetApp controller, with pricing tiered according to the NetApp model number. There are no capacity limitations in terms of users, total storage or number of files, making RestoreManager licensing very easy to manage.

Please [contact us](#) for a price quote.

